



SUPPLIER OF NATURAL STONE





# Welcome...

...to the McMonagle Stone brochure, presenting our most comprehensive portfolio of native and imported natural stone products to date.

Whether you are looking to add value to your property or need inspiration to create a great outdoor space, this new guide will be a valuable tool to help you achieve your dream project.

Be inspired by our extensive collection of quality and innovative walling, garden landscaping and driveway products.

All our products are continuously monitored to maintain our excellent product quality and high ethical and environment standards. In these pages you will find everything you need to transform your idea into a beautiful new house, garden or driveway, so delve inside!



## Contents

### Quartzite

Quartzite Walling Stone .....	04
Quartzite Garden Walling .....	09
Quartzite Cladding .....	09
Quartzite Paving & Setts .....	10

### Sandstone

Sandstone Architectural .....	14
Restoration .....	18
Sandstone Walling Stone .....	20
Sandstone Cladding .....	26
Sandstone Paving & Setts .....	28
Sandstone Circles .....	32

### Granite

Granite Architectural .....	34
Granite Walling Stone .....	36
Granite Cladding .....	37
Granite Paving & Setts .....	38

### Limestone

Limestone Architectural .....	42
Limestone Walling Stone .....	43
Limestone Cladding .....	46
Limestone Paving & Setts .....	48

### Slate

Slate Walling Stone .....	52
Slate Monoliths .....	53

### Accessories

Decorative Chippings .....	54
Stone Fireplaces .....	56
Stone Steps .....	58
Water Features .....	60
Garden Furniture .....	62
Stone Plaques .....	63
Stone Sealer .....	63
Romex Pavement Fixing Mortar .....	64
Additional Information .....	66

# Quartzite

## Walling Stone



Brown Random Rubble

Quartzite is a hard metamorphic rock that was once a sedimentary rock. On coming into contact with deeply buried magma, the sedimentary rock converted into the much harder metamorphic. Although both rocks are similar in appearance, as the minerals that formed them are deposited in layers; Quartzite has a crystalline appearance.

Quartzite is suitable for use both internally and externally. It can be used in many different forms; walling stone, cladding, setts, crazy paving and sawn paving.



Brown Machined Block



Brown Machined Block

McMonagle Stone prides itself on being the largest producer and exporter of the much-acclaimed Donegal Quartzite. Our nearby quarries in Glencolmcille possess the oldest, hardest and most coveted Quartzite in Ireland. With these quarries, we can produce two different colours in many different forms, which are quite different from each other in shape and appearance.



Grey Machined Block with Tinted Mint Lintels & Quoins

The subtle blend of colour tones in our unique Donegal Quartzite are quite distinctive. This sets it apart from all other natural stone, making it a very attractive stone for use in house façades or boundary walls. Each piece of this stone has its own individual fingerprint, as mineral distribution varies slightly from place to place in the quarries and even in the individual slab. Minerals like quartz, mica and feldspar occur in slightly varying amounts and create the most subtle, yet striking effects.

# Quartzite

## Walling Stone

We offer a fully integrated collection of walling, paving, cladding and accessories in Donegal Quartzite. It is simple and effective to use and is superb value for money. The wide choice of components and colours gives the customer great scope for innovative design.

### Options

- Brown Quartzite
- Grey Quartzite

### Design Tip

Mix our brown Quartzite with our grey Quartzite to give a completely different appearance. You can create a look to suit your own personal taste by deciding on the amount of each colour of Quartzite within your own individual design.



Brown & Grey Machined Block

Donegal Quartzite walling stone can be purchased in two forms: Random Rubble or Machined Block. Random Rubble is hand picked stone and is available in pallets or bulk loads (approximate coverage from 5-6 \*Sq. m. per pallet and 50-65 Sq. m. per truck load respectively).

The alternative is Machined Block. This material is machine split and is available in bags or pallets (approximate coverage of 3.5 - 4 Sq. m. per bag and 6-7 Sq. m. per pallet respectively).

\*Sq. m. = Square Metre



Brown & Grey Machined Block



Brown Random Rubble



Brown & Grey Machined Block

# Quartzite

## Walling Stone



Brown Random Rubble



Grey Random Rubble with Silver Granite Cills & Lintels



Grey Machined Block with Silver Granite Cills & Lintels

Donegal Quartzite Garden Walling is available in brown and grey and supplied in cages. There are approximately 4-5 Sq. m. per cage. Garden Walling is smaller pieces of Random Rubble walling, which are selected and graded to provide stone suitable for low-level walls.



Brown Garden Walling



Donegal Quartzite Cladding

Donegal Quartzite Cladding is similar in appearance to Quartzite Crazy Paving with its random sizes. This material is split by hand. The mica layer is the deciding factor of the splitting possibilities. The distance between the layers, decides how thick and even, the slab will be. Standard production for cladding uses natural surfaces, top and bottom varying between 8-15mm.



Donegal Quartzite Sawn Paving

## Quartzite Paving & Setts

Quartzite is characterised as being exceptionally durable, with an enormous flexural strength and low water absorption. The natural surface is smooth and skid

### Options

- Heavy Crazy paving, 25-40mm (25m<sup>2</sup> per pallet)
- Light Crazy Paving, 15-25mm (35m<sup>2</sup> per pallet)
- Sawn Paving, 8-15mm, 15-30mm & 30-50mm x fixed widths x random lengths
- Celtic Square, 3m x 3m with an option to create an alternative to your choice.
- Setts, 200 x 100 x 40-70mm and 100 x 200 x 40-70mm
- Rio Quartzite Sawn Paving, 20-35mm x fixed widths x random lengths
- Rio Quartzite Paving, Hand-cut edges, 300 x 300mm, 300 x 600mm & 600 x

### Design Tip

Extend your Celtic Square by simply adding Donegal Quartzite paving to your patio.



Donegal Quartzite Sawn Paving

Donegal Quartzite Crazy Paving



Donegal Quartzite Sawn Paving has a wide variation of colours, varying from warm golden browns to cool blue grey tones. Our Quartzite Sawn Paving has a natural riven finish.

Donegal Quartzite Crazy Paving is perfect for use when creating pathways with a difference. Crazy paving is made up of random sizes with a wide variation of colours, which means that Donegal Quartzite Crazy Paving is capable of enhancing any garden or patio area. This material is hand split and carefully selected in various sizes between 15-35mm and 25-40mm in thickness.



Celtic Square – Donegal Quartzite Tiles & Irish Limestone Paving



Donegal Quartzite Setts & Chippings with Rio Quartzite Stepping Stones



Donegal Quartzite Stepping Stones

## Quartzite Paving & Setts

The Celtic Square is made up of Donegal Quartzite Sawn Paving with a riven surface, and Irish Blue Limestone with a flamed finish. It is generally 3m x 3m in size, but can be tailored to each individual project. A Celtic Square gives an ideal focal point to any garden, as these two stones complement each other beautifully.

Donegal Quartzite Setts are a hardwearing and low maintenance natural stone, suitable for driveways, patios and garden paths. Quartzite setts have a natural riven surface with split or sawn edges.

Quartzite Stepping-Stones are perfect for linking paved areas, where there may not be enough room for pavement. The beautiful blend of colour tones make it distinct from all other natural stone. Stepping-Stones are approximately 35-45mm in thickness and approximately 0.5m in diameter.

### Design Tip

When laying Stepping-Stones across a lawn, the top surface should be kept below turf level to ensure easy mowing.



Quartzite Sett  
200x100mm



Quartzite Sett  
100x100mm



Donegal Quartzite Sawn Paving

# Sandstone

## Architectural



Gothic Door Surround

We have the capability to design and manufacture high quality finished stone masonry for private and commercial clients. The full in-house service of stone procurement, design, manufacture, and delivery including fixing where appropriate, provides a reliable and professional single point responsibility on prestigious projects for discerning clients.



Bespoke Pillar



Portico with Window Surrounds, Plinth & Sawn Paving



Sandstone Cantilevered Stairs





# Sandstone Architectural

At McMonagle Stone we will gladly be of assistance to you and your project, no matter how large or small. All customers are valued equally and every effort is made to make your buying experience a

## Options

- Cills
- Lintels
- Plinths
- String course
- Stooled Cills
- Jambs, Mullions and Transoms
- Corbels
- Quoins

We offer a comprehensive design service, from conception to completion and we can assist with all your design requirements. For new build or restoration, we will visit the site and assist in taking all necessary details and templates. Drawings can then be produced on AutoCAD and emailed for approval. We accept AutoCAD drawings by email or as a hard copy. Each stone is individually detailed in 3D for the final checking process. Full size templates are printed off on a continuous A1 plotter or cut from plywood. Our Design technicians, with masonry detailing experience, liase continuously with the architect and engineer, ensuring co-ordinated information prior to production. Approved design information is sent directly to state of the art CNC

Cladding to Column, Moulding Door Surround, Plinth & Cills



Arched Door Surround with Keystone, Quoins & Window Surrounds



Freestanding Sandstone Portico



Door Surround, with Moulded hood, Quoins & Kneeler Stones to Support Barge Coping



Sandstone Cill Bush-Hammered Finish



Sandstone Cill Smooth Finish

# Restoration



Castle Prior to Restoration



Completed Castle



Lough Eske Castle

At McManagle Stone, we have been involved with many successful conservation and restoration projects.

We can offer a complete service: cleaning, re-pointing work with traditional lime mortar, indenting and replicating existing stonework. Our close attention to detail has been paramount to our success in these projects.



Restored Oriel Window

Lough Eske Castle has been one of the most fulfilling and exciting restorations that McManagle Stone was honoured to undertake. The castle traces its roots all the way back to the late 1400's and to the famous O'Donnell family that founded the historic town of Donegal.

The original castle was first built around 1474. Stone that dates back to 1621 remains on the property to this day. The current Lough Eske Castle was constructed in the 1860's, on the site of an old Brooke mansion, but was destroyed by fire in 1939. Harcourt Developments completed the newly renovated Lough Eske Castle in 2007 and Caroline Dickson & Associates Architects, supervised the restoration work.

We provide a site fixing service with directly employed qualified masons or trained specialist sub contractors, or a combination of both. All fixer-masons are experienced in traditional masonry construction including fixings, restraints and sensitive restoration techniques. Experienced masonry-qualified managers will supervise all site work. Maintaining close dialogue with associated trades and the main contractor, ensuring a first class finished and fitted product, from conception to construction.

# Sandstone

## Walling Stone



Brown Machined Block

Sandstone is a sedimentary rock composed mainly of feldspar and quartz. Like sand itself, Sandstone comes in various hues and colours. It is a porous and soft stone, which makes it easy to work with and a very popular building material.

Blue Centre Sandstone is unique to our Mountcharles Quarries. It derives its name from its beautiful mixture of the subtle colour tones of blue and golden brown.



Sawn Bed Machined

Brown Sandstone is also a Mountcharles Sandstone. It has a stunning mixture of neutral shades including cream, beige and golden browns.

Sandstone walling can be purchased in two forms for walling stone. It is available in Random Rubble form and is sold by the pallet or bulk load (approximate coverage from 5-5.5 Sq. m. per pallet and 45-50 Sq. m. per truck load).

The alternative is Sandstone Machined Block and is available in bags or pallets (approximate coverage of 3-3.5 Sq. m. per bag and 6-7 Sq. m. per pallet).

Brown and Blue Centre Machined Block



Brown Random Rubble with Sandstone Quoins, Plinth, Door and Window Surrounds



# Sandstone Walling Stone

Customers often choose to have a mixture of colours when using Sandstone. The variation in colours, blend into almost any surrounding area, incorporating your house into its natural environment. We supply a large selection of colours in Sandstone walling, to facilitate the option of mixing and matching, to create many different blends and finishes.

## Options

- Brown/Buff Sandstone
- Blue Centre Sandstone
- Blue Grey Sandstone
- Grey Sandstone
- Pink Sandstone
- Sawnbred Sandstone

## Design Tip

Give your home a more modern, architectural finish by adding Sandstone cills, lintels, quoins, door surrounds etc.



Mixed Machined Block



22 Brown and Blue Centre Machined Block



Mixed Random Rubble with Sandstone Door and Window Surrounds



Mixed Machined Block



Kil Machined Block

## Sandstone Walling Stone

We offer a choice of two different types of grey Sandstone walling; Blue Grey Sandstone and Kil Sandstone.

Kil Sandstone is a mixture of grey tones with the occasional splash of brown; overall, this walling stone is quite consistent in colour. It is suited to both traditional and contemporary buildings. This material is machine split and is available in bags (approximate coverage of 3 – 3.5 \*Sq. m. per bag respectively).



Kil Machined Block



24 Kil Machined Block



Blue Grey Random Rubble

Blue Grey Sandstone has a wonderful appearance, predominately consisting of grey and blue shades with a hint of brown. This material can be purchased in two forms: Random Rubble or Machined Block. Random Rubble is hand picked stone and is available in pallets or bulk loads, (approximate coverage from 5-6 Sq. m. per pallet and 50-65 Sq.m. per truck load respectively).

The alternative is Machined Block. This material is machine split and is available in bags (approximate coverage of 3.5-4 Sq. m. per bag respectively).

# Sandstone Cladding



Ashlar Cladding



Ashlar Cladding

## Ashlar Cladding

We supply natural stone cladding in bespoke sizes according to your specific design. Traditional external leaf handset cladding is generally used in cavity wall construction and fixed in accordance with \*BS 8298 with typical methods of attachments and support.

The course heights and lengths are to the project specification, while the typical thickness for Sandstone is 50mm. However, alternative thickness would need to be considered subject to structural calculation and performance testing. Generally, 5mm joints are pointed with a flexible material. All special stones are cut to project requirements, e.g. Coping, Quoins and Reveal stone etc.

\* British Standards



Fixing of Ashlar Cladding



Ashlar Cladding

We stock a wide range of colours and various textures of Sandstone Cladding to give you an excellent choice when choosing an alternative to walling stone. By using the warm colours of sandstone indoors, it gives a unique and contemporary look to your home.



Tinted Mint Cladding



Boland Blue Cladding



Modak Paving

# Sandstone Paving & Setts

We stock a large range of ethically sourced natural Indian Sandstone paving with hand-dressed edges and a natural riven surface, typically 25-40mm in thickness.

**Tinted Mint** - Is a beautiful natural riven Sandstone with a mixture of yellow, buff, pink, and golden colours.

**Modak** - Is a stunning combination of warm pink and orange tones. Its base is pink with some subtle shades of cream and beige.

**Autumn Brown** - Is a combination of neutral shades of light and dark browns.

**Raj Green** - Is a mix of cool green and grey colours with gentle hues of golden brown running through the



Tinted Mint Sett  
200 x 100mm



Tinted Mint Sett  
100 x 100mm



Autumn Brown Paving



Raj Green Paving



Tinted Mint Paving & Setts

# Sandstone

## Paving & Setts



Ebony Sandstone Steps



Grey Sandstone Paving & Setts



Tinted Mint Paving

### Options

- Project Packs
- Single Sizes
- Setts
- Steps
- Circles
- Calibrated to 22mm Project Packs
- Polished 900 x 140mm

### Design Tip

Our Sandstone Paving has tapered edges. Therefore, always lay the largest face uppermost.



Revina Paving



Camel Dust Paving

**Grey Sandstone** - Has a contemporary look with varying shades of light and dark grey, complementing each other beautifully.

**Camel Dust** - Has a very neutral blend of subtle golden brown tones throughout this natural riven paving.

**Revina** - Is a colourful, natural riven paving, with a wide variation of colours including pinks, golden browns and beiges.

	Tinted Mint	Grey Sandstone	Modok	Autumn Brown	Raj Green	Revina
300 x 300mm	■		■			
300 x 600mm	■	■	■	■	■	■
600 x 600mm	■	■	■	■	■	■
600 x 900mm	■	■	■	■	■	■
450 x 300mm	■					
450 x 600mm	■					
450 x 450mm	■					
Project Pack (10.08m <sup>2</sup> ) (3 Sizes)	■	■	■		■	■
Setts 100 x 100 x 50-70mm	■	■				
Setts 200 x 100 x 50-70mm	■	■				
Calibrated Project Pack (15.25m <sup>2</sup> ) (4 Sizes)	■	■	■	■	■	■



Grey Sandstone Sett 200 x 100mm



Grey Sandstone Sett 100 x 100mm

This table is a guide to the Sandstone paving we hold in stock. If you require a specific type or size in Sandstone that we do not stock, we will do our utmost to source that product for you.



# Sandstone Circles

Adding a circle to your paving, gives the opportunity to add character and elegance to your patio. Sandstone circles are available in Tinted Mint, Modak and Grey Sandstone. There is also the option of creating your own circle using Sandstone Setts.



Tinted Mint Circle & Setts



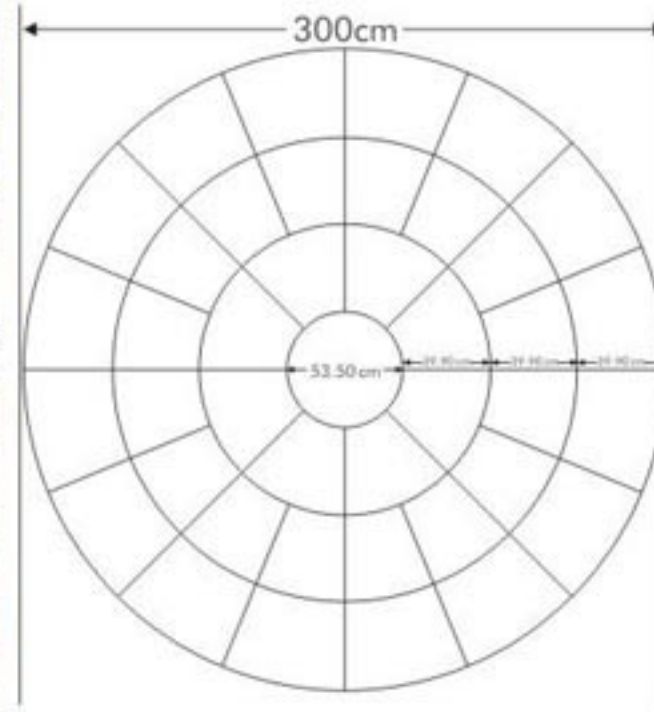
Modak Circle



Grey Sandstone Circle & Blue Limestone Setts

## Design Tip

Make your circle unique by adding Setts to the border of your circle. Alternatively add a centrepiece to draw attention to your Sandstone circle.



Tinted Mint Circle

Circles Available	Tinted Mint	Grey Sandstone	Modak
2.00m	■		
2.50m	■		
3.00m	■	■	■
3.50m	■		
4.00m	■		
5.00m	■		





Silver Portico and Steps

## Granite Architectural

At McMonagle Stone, we are capable of producing and restoring buildings of the most complex designs and completing these projects to the highest of standards.

The use of architecturally cut Granite adds value to any project. Experienced technicians and craftsmen can achieve any moulding or profile required to specification, through the use of fully automated modern saws using AutoCAD facilities.

The two main colours we stock in Granite are silver and brown. We have found that these colours are the most popular colour choice, as they compliment almost all types of walling stone.



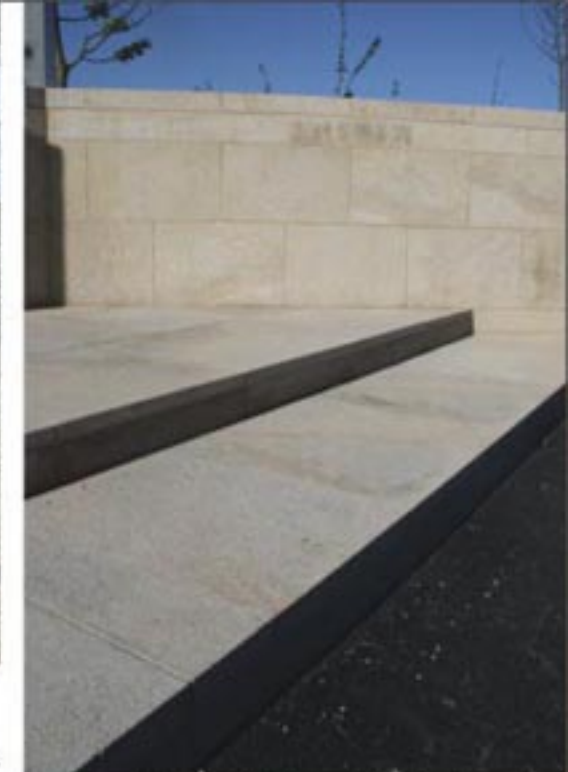
Gothic Window Surrounds, Cladding, Plinth & Paving

### Options

- Cills
- Lintels
- Quoins
- Plinths
- Plaques
- Window Surrounds
- Corbels
- String Course moulded to specification
- Kerbing
- Steps



Silver Granite Apex Wall Capping



Brown Granite Step, Cladding and Wall Capping

Architecturally cut granite is stocked in Brown and Silver, with a bush-hammered finish. We are capable of supplying a range of colours and finishes in Granite on request.



Silver Granite Quoin with  
Bush-Hammered Finish  
25 x 25mm Chamfer  
450 x 230 x 220 x 120mm



Silver Granite Quoin with  
Bush-Hammered Finish  
25 x 25mm Chamfer  
450 x 230 x 220 x 50mm



Silver Granite Plinth with  
Bush-Hammered Finish  
50 x 50mm Chamfer  
1200 x 400 x 100mm



Silver Granite Kerb with  
Bush-Hammered Finish  
25 x 50mm Chamfer  
1200 x 200 x 125mm



Brown Granite Kerb with  
Bush-Hammered Finish  
25 x 25mm Chamfer  
1000 x 150 x 150mm



Brown Granite Kerb with  
Pineapple Finish  
1000 x 200 x 125mm



Brown Granite Kerb with  
Bush-Hammered finish  
5 x 5mm Chamfer  
1200 x 200 x 125mm



Brown Granite Cladding and Wall Capping

# Granite

## Walling Stone



Machined Block

Granite is an igneous rock, which has cooled slowly, allowing distinctive crystal patterns to form. These crystals are clearly visible to the naked eye. Most granite consists of three minerals, which can be easily distinguished, Quartzite, Mica and Feldspar.

Donegal Granite Machined Block walling stone is available in tonne bags (approximate coverage of



Machined Block with Silver Granite Cills



Black Granite Cladding



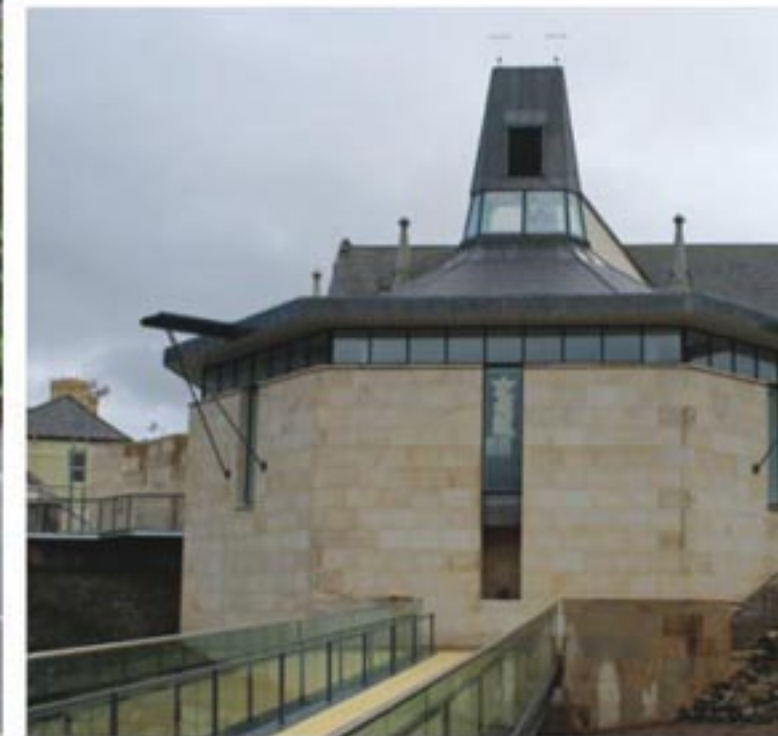
Black Granite Cladding

# Granite

## Cladding

Granite is known for its properties of durability and permanency of its colour and texture. This makes it very versatile and gives it potential for use in many different types of projects.

We supply a wide range of Granite Cladding. If you require a specific type of Granite Cladding, we can



Brown Granite Cladding



Silver Granite Rubble Cladding

# Granite

## Paving & Setts

Granite is one of the oldest, most durable and most respected of building materials. Traditionally, it is the material chosen by both architects and engineers when permanence, endurance of colour and a safe, non-slip texture are of the essence. The Granite paving we have on offer, comes in a selection of colours, finishes, sizes and depths to suit your requirements.



Silver Granite Setts 100 x 100mm



Silver Granite Paving Flamed Finish



Tumbled Silver Granite Setts 200 x 100mm



Silver Granite Paving Flamed Finish



Silver Granite Paving Flamed Finish

**Silver Granite Paving** - Is a stunning light grey colour with small flickers of a dark blue/grey throughout the stone. It has a flamed surface and is sawn on all six sides.

### Options

- Project Packs
- Single Sizes
- Setts
- Kerbing
- Steps
- Circles (Choice of 3 sizes)
- Choice of 30mm or 50mm in depth

### Design Tip

Granite Setts are ideal for driveways as they are extremely durable, hardwearing and capable of



Silver Granite Sett 100x100mm

Silver Granite Sett 200x100mm

Tumbled Silver Granite Sett 200x100mm

# Granite

## Paving & Setts

Our stunning range of Granite Paving offers you the ideal choice, to give your patio a sophisticated and authentic look. By incorporating circles and setts to your Granite paving, it gives you the opportunity to add character to your patio.

**Brown Granite Paving** - Is a beautiful sparkling golden brown with some distinctive darker tones running through the stone. Brown Granite paving has a bush-hammered finish, sawn on all six sides. This textured finish provides an excellent slip resistance.



Pink Granite Sett  
100 x 100mm



Dark Grey Granite Sett  
100 x 100mm



Tumbled Brown Granite  
Sett 100 x 100mm



Tumbled Brown Granite Sett  
200 x 100mm



Brown Granite Sett  
100 x 100mm



Brown Granite Sett  
200 x 100mm



Brown Granite Paving Bush-Hammered Finish



Brown Granite Paving Bush-Hammered Finish



Brown Granite with Dark Grey Granite Setts 100 x 100mm

	Silver Granite	Brown Granite	Dark Grey Granite
300 x 300 x 30mm	■	■	
300 x 600 x 30mm	■	■	
600 x 600 x 30mm	■	■	
300 x 300 x 50mm	■	■	
300 x 600 x 50mm	■	■	
600 x 600 x 50mm	■	■	
Project Pack (30mm) (10.8m <sup>2</sup> ) (3 Sizes)	■	■	
Sett 100 x 100 x 100mm	■	■	■
Sett 200 x 100 x 100mm	■	■	
Tumbled Sett 100 x 100 x 100mm	■	■	
Tumbled Sett 200 x 100 x 100	■	■	

# Limestone Architectural

## Options

- Irish Limestone Cills & Lintels
- Irish Limestone Window Surrounds
- Blue Limestone Cills & Lintels
- Blue Limestone Window Surrounds
- Blue Limestone Wall Capping
- Blue Limestone Steps
- Blue Limestone Plaques
- Black Limestone Hearths



Blue Limestone Steps

We manufacture a large amount of architecturally cut Limestone. Limestone is a popular choice for both residential and commercial buildings. There is a choice of Irish Limestone or the alternative, Blue Limestone.



Black Limestone Wall Capping



Limestone Hearth



Tuscan Style Window Surround in Irish Limestone



Blue Limestone Machined Block

# Limestone Walling Stone

## Options

- Blue Limestone
- White Limestone
- Nova Black

## Design Tip

Using Silver Granite Cills and lintels with Irish Blue Limestone Walling gives an excellent contrast, which complements each stone beautifully.



White Limestone Machined Block

# Limestone

Walling Stone



Modular cut Limestone Walling

Limestone is a sedimentary rock composed largely of the mineral calcite, the balance being made up of silica, flint, sand and clay. The primary source of calcite is most commonly marine organisms. Limestone is quarried from locations, which millions of years ago, would have formed the floor of a shallow area of the sea. Limestone is formed close to the earth's surface and captures fossilised plant and animal life. Similar to marble and granite, quality Limestone is used in a wide range of interior and exterior building applications.

All of our Limestone walling stone is machine split and supplied by tonne bags (approximate coverage varying from 3.5-4 Sq. m. per bag).



White Limestone Machined Block

White Limestone Machined Block





Limestone Cladding



Blue Limestone Rock-Faced Cladding

## Limestone Cladding

We supply natural stone cladding in bespoke sizes according to your specific design. Traditional external leaf handset cladding is generally used in cavity wall construction and fixed in accordance with \*BS 8298 with typical methods of attachments and support. The course heights and lengths are to the project specification, while the typical thickness for Limestone is 40mm.

\*British Standards



Blue Limestone Rock-Faced Cladding has 18 pieces per Sq. m and is 30mm thick. This cladding is also available in Sandstone.



Blue Limestone Rock-Faced Cladding



Beige Limestone Cladding

Limestone Cladding is one of the most popular cladding materials. It is available in many different finishes, styles and colours.

If we can offer you any advice, information or material which may be of help in your decision making, then we would be delighted to share our expertise, experience and our products.



Limestone Cladding



# Limestone

## Paving & Setts



Blue Limestone Paving with honed finish, Donegal Quartzite Walling Stone and Sandstone Benches

**Blue Limestone (Honed Finish)** - Is an exceptionally dark, blue colour with a smooth honed finish. It is sawn on all six sides.

### Options

- Project Packs
- Single Sizes
- Setts
- Kerbing
- Steps

### Design Tip

Using random-sized paving makes your patio area look bigger. To make your patio area look smaller, use a set pattern, or the same-sized paving.



Flamed Limestone Setts 200 x 100mm



Black Limestone Paving

**Black Limestone Paving** - This material has a wonderful surface finish and distinctive colour. It provides a striking and individual look to any project. An attractive durable Limestone, Black Limestone Paving has a variable subtle riven texture. This stone is jet-black when wet, but dark grey to black when dry.

The dark grey/black colour naturally tones down, as the product weathers to a stylish graphite grey. We ask customers to consider using a preparatory stone impregnator to ensure the dark colour is maintained. Should the material be left uncoated the stone weathers and lightens.

*Please note this is one of the few natural stones that will fade with weathering. To protect and enhance the natural colour, we recommend McMonagle Stone Gloss or Matt Sealer.*

**Black Limestone Setts** are available in 200 x 100 x 70-90mm and 100 x 100 x 70-90mm, all sides split with the option of a tumbled finish.



**Flamed Limestone Setts** are available in 200 x 100 x 50mm and 100 x 100 x 40mm with sawn edges with the option of a tumbled finish.



**Kota Brown Tumblers** are available in 200 x 100 x 70-90mm.



# Limestone

## Paving & Setts

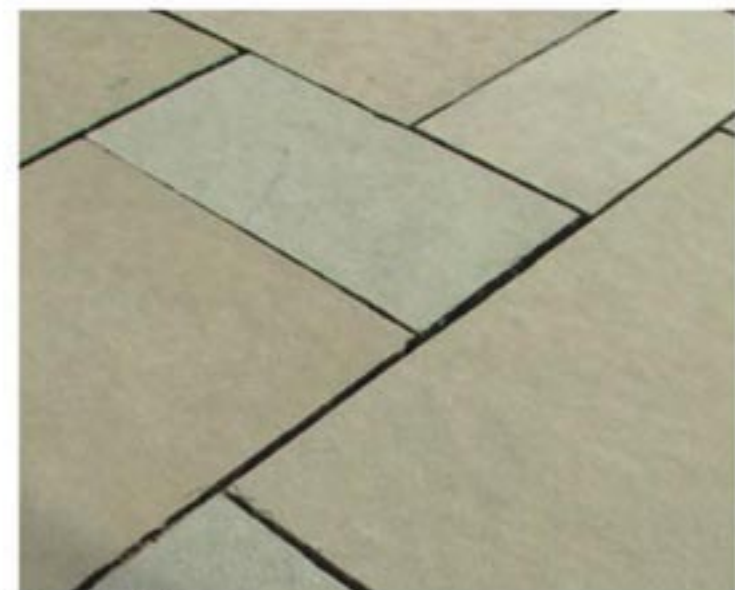


T-Grey Paving

**T-Grey Limestone** - Has a contemporary feel to it, as it has beautiful light grey and blue tones running through it with a smooth riven surface.

**Blue Limestone (Flamed Finish)** - Has an attractive light grey colour with a slightly textured finish, giving it a good slip resistance.

**Kota Brown Limestone** - Is a fresh, pale, green colour with a natural smooth riven finish.



Kota Brown Paving



Blue Limestone Paving Flamed Finish



T-Grey Paving

	Blue Limestone (Flamed)	Blue Limestone (Honed)	Irish Limestone	Kota Brown	T Grey	Black Limestone
300 x 300mm	■	■			■	■
300 x 600mm	■	■	■	■	■	■
600 x 600mm	■	■	■	■	■	■
600 x 900mm			■	■	■	■
Project Pack (10.8m <sup>2</sup> ) (3 Sizes)	■	■		■	■	■
Setts 100 x 100mm	■	■				■
Setts 200 x 100mm	■	■				■
Tumbled Setts 200 x 100mm	■			■		

**Irish Limestone** - Is a striking blue colour with a distinctive white fossil running through the stone. It is available in a number of surface finishes, flamed, bush-hammered, chiselled or honed.

### Options

- Single Sizes
- Kerbing

### Design Tip

Add a "Celtic Square" to your Irish Limestone paving to give your patio a special focal point.



Irish Limestone Paving Flamed Finish

# Slate

## Walling Stone



Liscannor Machined Block

Slate is a fine-grained metamorphic rock. It is composed of quartz and muscovite/illite. Slate is produced by a low grade metamorphism, which is caused by relatively low temperatures and pressure.

Liscannor Walling Stone can be purchased in two forms; Random Rubble or Machined Block. Random Rubble is hand-picked stone and is available in pallets or bulk loads (approximate coverage from 4-5 Sq. m. per pallet and 40-50 Sq. m. per truck load).

Another alternative is Machined Block. This material is machine split and is available in bags or pallets (approximate coverage of 3.5-4 Sq. m. per bag or 6-7 Sq. m. per pallet).

Donegal Slate Walling stone can be purchased in two forms; Random Rubble or Garden Walling. Random Rubble is hand-picked and is available in pallets or bulk loads (approximate coverage of 5-6 Sq. m. per pallet and 35-40 Sq.m. per truck load). The alternative is Garden Walling supplied in cages (approximate coverage of 3.5-4 Sq. m.).



Liscannor Random Rubble



Donegal Slate Walling



Donegal Slate Walling

Slate is perfect for either interior or exterior needs, commercial or mere gardening use. Therefore it is not surprising the escalating interest that has been shown by architects and developers working on contract projects and large dwellings.

### Options

- Donegal Slate
- Liscannor

### Design Tip

Bring some life to your garden by adding a Slate Monolith water feature. Adding a Slate Monolith water feature to your garden, gives you the opportunity to incorporate the stone from your house into your garden.

# Slate

## Monoliths



Drilled Slate Monolith



Slate Monolith



Slate Monolith



Donegal Slate Walling



14mm Gold Quartzite Chippings

## Decorative Chippings

We have an extensive range of decorative chippings, ideal for pathways, flowerbeds, driveways, patios and even border decoration. We sell our chippings per tonne bag or loose by truck load.



Slate Mulch with Modak Stepping Stones



20mm Gold Quartzite Chippings



20mm Gold Quartzite



Scottish Beach Pebbles



Brown Shingle



14mm Gold Quartzite



10mm Gold Quartzite



Blue Pebble



Ardmore Chippings



Slate Mulch



14mm Rose Quartzite





Brown Sandstone Random Rubble with a Black Limestone Hearth



Bespoke Sandstone Fireplace

## Stone Fireplaces

McMonagle walling stone is used extensively for building wonderful stone fireplaces that enhance the beauty of any living space. You can design a fireplace that is just right for you. We also create Sandstone and Limestone hearths, mantles and surrounds for your fireplace.



Sandstone Hearth and Mantle



Brown Quartzite Machined Block with a curved Black Limestone Hearth



Brown Quartzite & Sandstone Machined Block with a Black Limestone Hearth



Bespoke Sandstone Fireplace

We pride ourselves in making bespoke natural stone fireplaces and fireplace surrounds from Sandstone and Limestone. These simple yet beautiful fireplaces can be made to your specification. There is a timeless elegance to our natural stone, so come visit us and we will help design the best fireplace suited to you.

Our Sandstone is a warm and beautiful stone, that blends exceptionally well into any living area. Sandstone fireplaces are suitable for gas, solid fuel, and wood burning fires.



Bespoke Sandstone Fireplace



Sandstone Steps, Brown Quartzite Walling and Blue Limestone Paving



Tinted Mint Sandstone Steps



Black Limestone Steps

## Stone Steps

We have an excellent selection of natural stone steps. We possess an extensive range of colours and finishes.

### Options

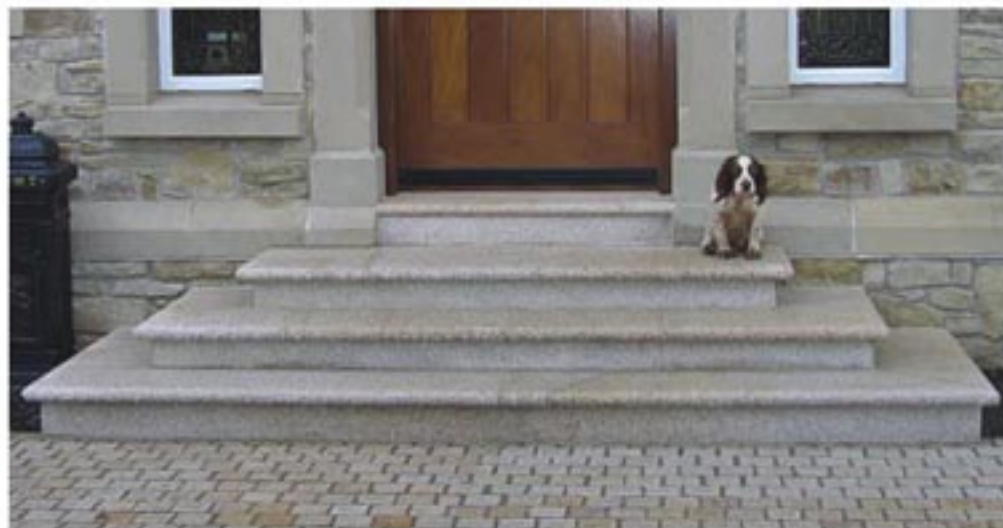
- Sandstone Steps
- Granite Steps
- Limestone Steps

### Design Tip

Create different levels in your garden using steps. Steps give your garden another dimension and are a perfect way of bringing two areas together.



Silver Granite Steps



Brown Granite Steps

When deciding on the steps best suited to you and your garden, there are many options available. Our stone steps come in all shapes and forms. You will be guaranteed to be satisfied with the finished product you receive.

We can create individual bespoke steps to suit your needs and requirements.

If you supply us with precise dimensions, we will design a step to fit your front door in whichever type of stone you wish to use.

To view some more images and ideas on steps log onto our website [www.mcmonaglestone.ie](http://www.mcmonaglestone.ie)



Sandstone Steps with Modak Paving

## Water Features

Addition of a water feature will add another dimension to any garden.



Limestone Rockery

We supply an excellent range of carefully selected medium to large stones and boulders for you to create your perfect water feature or rockery. The rockery stone we produce includes Quartzite, Lava, Sandstone, Limestone and Slate.



Bespoke Water Feature



Donegal Quartzite Rockery



Brown Quartzite Garden Walling with Tinted Mint Wall Capping and Sandstone Mill Wheel



Irish Weathered Limestone

### Weathered Limestone

Our weathered Limestone originates from the west coast of Ireland. It has a distinctive look with its deep channels and shallow pans, where it gathers soil. Often in these shallows, plants and grasses grow, a beautiful feature to have in any garden.

### Lava Rockery

Lava Rockery originates from our Quartzite quarry in the west coast of Donegal. It has a fabulous blend of mica, pyrite and trace elements of sulphides. Lava Rockery is available polished/unpolished, drilled/un-drilled and in various heights and widths.



Lava Feature Stone



Brown Sandstone Random Rubble with Tinted Mint Wall Capping

# Garden Furniture

We have an excellent range of Garden Furniture both imported and created in house. We create bespoke garden furniture designed to suit our customers' requirements.

## Options

- Memorial Benches
- Granite Table & Benches
- Stone Flower Pots
- Stone Arm Chairs
- Bespoke Garden Furniture

For more images of the garden furniture we stock, click onto our website [www.mcmonaglestone.ie](http://www.mcmonaglestone.ie)



Brown Granite Table & Benches



Brown Granite Flower Pot



Silver Granite Flower Pot



Bespoke Sandstone Plaque

# Stone Plaques

Our stone plaques are a unique and stylish way of displaying your name or logo. We create bespoke plaques to suit your requirements, using the design and font you choose yourself. Stone plaques are made from Sandstone, Limestone or Granite. We also produce freestanding feature stones or plaques, which may be built into a wall.



Plaque Feature Stone



Bespoke Sandstone Bench Bush-Hammered Finish with inscription



Bespoke Sandstone Armchair



Plaque Feature Stone



Plaque Feature Stone

# Stone Sealer

All natural stone is porous, which allows liquids and gases to penetrate and perhaps even damage the stone. Some stones are more porous in nature than others and therefore must be sealed. McMonagle Stone sealer protects against the ingress of damaging liquids and minerals, ensuring the longevity of your stone. It also offers a protection against the elements. To be advised on a sealer suitable for your stone, give one of our sales team a call.

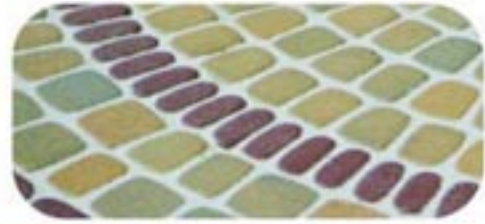


63

Grey Granite Table & Benches Polished Finish



# ROMEX® Product Overview



# Pavement Fixing Mortar

Products	Areas of application	Water permeability	Colours	Joint width	Joint depth	Packaging	Application	
<b>ROMPOX® - PATIO</b> The pavement fixing mortar for sensitive surfaces > for pedestrian traffic loads	e.g. pedestrian areas such as patios and pathways 	high	neutral stone grey basalt 	≥ 5 mm	≥ 30 mm			can be applied at surface temperatures from > 7 °C / protect against rain and pedestrian traffic for 12 – 24 hrs.
<b>ROMPOX® - EASY</b> The easiest pavement fixing mortar > ready to use > suitable for DIY use > for pedestrian traffic loads	e.g. pedestrian areas such as patios and pathways 	high	neutral stone grey basalt 	≥ 8 mm	≥ 30 mm			can be applied at surface temperatures from > 0 °C / protect against rain and pedestrian traffic for 12 – 24 hrs.
<b>ROMPOX® - DRAIN</b> The permeable pavement fixing mortar > water emulsifiable > for light traffic loads	e.g. house driveways, private and public car parking spaces up to 3 t	high	neutral stone grey basalt 	≥ 5 mm	≥ 30 mm			can be applied at surface temperatures from > 0 °C / protect against rain and pedestrian traffic for 12 – 24 hrs. and 6 days against traffic loads
<b>ROMPOX® - D1</b> The proven pavement fixing mortar > water emulsifiable > for medium traffic loads	e.g. surfaces with normal car and light truck traffic up to 7,5 t	slight	neutral stone grey basalt 	≥ 3 mm especially for concrete stones, slabs and clinkers	≥ 30 mm			can be applied at surface temperatures from > 0 °C / protect against rain and pedestrian traffic for 12 – 24 hrs. and 6 days against traffic loads
<b>ROMPOX® - D2000</b> The modern pavement fixing mortar > can be applied during drizzle > can be driven on after 24 hours > for medium to heavy traffic loads	e.g. public surfaces that can only be blocked for short periods up to 25 t	very slight	neutral stone grey basalt 	≥ 5 mm	≥ 30 mm			can be applied at surface temperatures from > 0 °C / rain protection not necessary / pedestrian traffic after 6 hrs. and traffic loads after 24 hrs.
<b>ROMPOX® - TRAFFIC V2</b> The hardest pavement fixing mortar > high strength > for heaviest traffic loads	e.g. bus stations, loading bays and roads up to 40 t	very slight	neutral stone grey basalt 	≥ 8 mm	≥ 30 mm			can be applied at surface temperatures from > 7 °C / protect against rain and pedestrian traffic for 12 – 24 hrs. and against traffic loads for 3 days
<b>ROMPOX® - D4000</b> Paving fixing elutriant used for repairs > especially for the repair of broken joints > for medium to heavy traffic loads	e.g. public surfaces with quick re-opening times up to 25 t	very slight	neutral stone grey basalt 	≥ 3 mm	≥ 10 mm			can be applied at surface temperatures from > 0 °C / rain protection not necessary / pedestrian traffic after 6 hrs. and traffic loads after 24 hrs.
<b>ROMPOX® - WALL</b> The quick, cement free wall jointing mortar > no cement haze > no frost damage	e.g. for natural and concrete stone walls, vertical slabs and clinker surfaces	open to diffusion	neutral stone grey basalt 	≥ 5 mm	≥ 20 mm			can be applied at surface temperatures from > 7 °C / hardened after approx. 24 hrs.
<b>ROMPOX® - DEKO</b> The decorative grit and gravel hardener > hardens almost any kind of grit and gravel > for pedestrian traffic loads	e.g. tree-circles, graves, decorative surfaces indoors and outdoors 	high	transparent / colour intensifying	for surface depths from 30 mm				can be applied at surface temperatures from > 7 °C / protect against rain and pedestrian traffic for 24 hrs.

# General Information

## PRODUCT DIMENSIONS

All product weights and dimensions are approximate. The product sizes and coverage stated are those achieved when laid or built using approximate joint width for given products.

## PRODUCT SUITABILITY

Our natural stone is suitable for both internal and external use. The natural stone paving we supply is not suitable for driveways; it is primarily for pedestrian traffic, however we can advise on a solution for vehicular traffic. If you have any doubts as to the suitability of our products for your project, please contact one of our sales team.

## HEALTH & SAFETY

A lot of our products can be hazardous, especially when lifting, drilling, cutting and sawing. We suggest that more than one person should lift any stone heavier than 25kg. Health and Safety measures should be taken when working with stone. Protective gloves, eyewear, dust-masks and footwear should be worn at all times when working with stone.

## COLOURS & SIZES

The colours depicted in this brochure are as accurate as modern photography and printing processes allows. Therefore we recommend that colours be judged from actual materials, to acknowledge the diversity in colours, texture and markings. To avoid any possibility of colour banding take material from each package and mix on site, this ensures you will get the right overall colour.

## ETHICAL TRADING POLICY

McMonagle Stone is committed to practicing a good code of ethics. Our suppliers in India are visited and monitored to ensure they are ethical in their operations, particularly with regards to labour, health and safety, wages and treatment of their employees.

## AFTERCARE & CLEANING

Regular maintenance is required to keep the overall appearance of the product in pristine condition. We recommend that you keep your paved area free from leaves and natural debris, as this will keep your paving clean for longer. Natural stone paving should be cleaned at least twice a year, especially in autumn. To clean your paving, we suggest scrubbing with a stiff brush, using a mild detergent and hot water. If this does not work, there is the option of power washing your paving. For best results when power washing, remove any debris before starting, point the power-hose at a 30° angle and do not point directly at the joints. McMonagle Stone cannot be held responsible for the possible effects or damage caused by the contamination or application of some chemically based products that come in contact with the natural stone.

## PURCHASE & DELIVERY

Our natural stone products are available for both collection and delivery from our head office in Mountcharles, Co. Donegal. You can place orders by calling our head office on +353 749735061. We deliver throughout Ireland and the UK, direct to you, the customer.

## CHOOSING A STONEMASON OR PAVING LAYER

Choosing a Stonemason or Paving Layer is an extremely important task when aiming to achieve a high quality finish to your project. We recommend you request a list of reference jobs that the Stonemason/Paving Layer has completed.

## SEALING

McMonagle Stone sealer will enhance and protect your natural stone against weathering and the ingress of damaging liquids, grease, food and dirt. We recommend for you to test the sealer on a small sample of your stone, ensuring it gives you the required result prior to sealing your entire project. Sealing stone internally enhances colour, reduces dust and creates a water resistant layer, making cleaning and stain removal easier.

## PRODUCT SOURCING

We have the capabilities to source whatever stone you require for your project. Just contact one of our sales team with your requirements and we will be happy to advise and source that stone for you.

## LAYING PAVING

### PLANNING

Sketch out all areas to be paved, showing dimensions and laying patterns. Determine the quantity of pavement fixing mortar and bedding sand required. Arrange for all your paving requirements to be delivered before the onset of the project and stock nearby on a dry base.

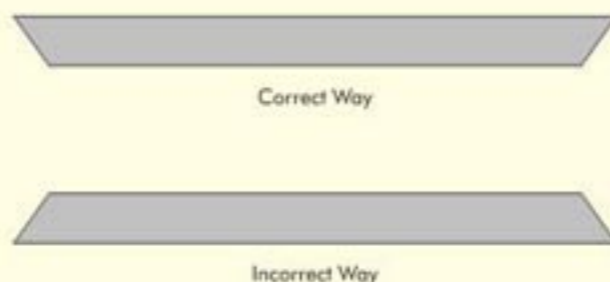
### PREPARATION

Decide where the paving is to run and mark as required. The area to be paved should be firm, level and well drained, to ensure long-term service and stability. If necessary, dig out any soft soil and replace with crushed stone. Mark out this area with pegs and adjust their height to the required finish surface levels, on private patio and driveway projects a fall of approximately 1:60 is usually adequate. The surface needs to be dug out at approximately 90mm. However depending on ground conditions, the depth can be calculated as average depth of flagstones + 35-50mm bed + any sub-base required. Sub base is not normally required for a path or patio unless there is a concern regarding the suitability of the sub-grade. However, any low spots can be filled with crushed hardcore, crushed stone or compacted bedding material.

### LAYING

It is recommended to start laying with full flags adjacent to a fixed point such as the house or boundary wall and to work towards an edge which may be adjustable. Alternatively, start from the corner with the longest straight edge. If laying your paving using a random layout or incorporating a circle, we suggest you dry lay the paving before you commence laying your paving. For greatest stability, the paving should be laid on a full mortar bed, using a wet mortar mix of 5 parts building sand to one part cement.

If using more than one mixed pack, take individual pieces from each crate and mix on site to achieve a consistent colour throughout your paving. Aim to achieve the exact position on first attempt. Tap paving into place. Paving should not bear any weight for at least one day. Please ensure that the paving is laid the correct way up. Slabs should be laid with the largest face uppermost.



## JOINTING

We are the sole supplier of Romex pavement fixing mortar; Romex is a polymeric jointing mortar. It is made up of a blend of epoxy resins and a mixture of special sands. It can be applied in two forms for pedestrian traffic, Romex Easy and Romex Drain.

### ROMEX EASY

This is ideal for DIY work and is packaged in pre-mixed 15 or 25kg tins. Once brushed into the joints, it reacts with the atmosphere and hardens. By following these 4 steps, you will have the perfectly jointed patio.

- 1 Clean both paving surface and joints thoroughly.
- 2 Pour the pavement fixing mortar evenly onto the surface and work it into the joints using a stiff brush. Make sure it is deep, hard and compact.
- 3 Carefully sweep off the stone surface until the entire mortar residue has gone. Sweep diagonally to the joint.
- 4 The freshly jointed surface must be protected against rain for the first 12-24 hours.

### ROMEX DRAIN

This product is supplied in 25kg bags with two 1-litre components. Romex Drain is stronger than Romex Easy, which makes it suitable for light vehicles (up to 3 tonne). The following are steps on using Romex Drain.

- 1 Clean both paving surface and joints thoroughly.
- 2 Pour the 25kg bag (filler components) into the mixer. Mix slowly and add in the two hardening components.
- 3 After mixing for approximately 3 minutes, add two litres of water and mix for a further 3 minutes.
- 4 Moisten the surface.
- 5 Apply the mixed paving mortar on the moistened surface and work into the joints using a rubber slider. The mortar should be poured on three or four different areas of the paving to get the best results.
- 6 After 10 - 15 minutes the excess mortar on the surface of the stones should be swept off carefully with a stiff brush. Then use a softer brush to do a final cleaning until the residual mortar has been removed.
- 7 The freshly jointed surface must be protected against rain for the first 12-24 hours.

We also stock other Romex Pavement Fixing Mortars for heavier applications (up to 40 Tonnes), if required. Please review our website for further information.

## WALL BUILDING GUIDE

### PLANNING

- Get professional advice if you are in any doubt, particularly with walls over 1.5m high and complex or stress carrying structures.
- Plan the wall and draw a design; this helps with calculating quantities and makes building quicker.

### PREPARATION

- A firm foundation is essential; walls need a concrete foundation three times wider than the thickness of the wall. Its depth should be at least 100mm with the base 300mm below ground level. For walls over 1m high the foundation base depth should be one third of the height of the wall above ground depending on ground conditions.

### CONSTRUCTION

- In the construction of a single skin stone wall built against block work with ties at 450mm centres horizontally and 250mm vertically, we recommend when using random rubble, stone should be built at 200mm and can be built at 150mm wide if necessary. This will minimise the amount of cutting and possible wastage for random rubble. For more information regarding construction of house façades, please contact any of our sales or technical team.
- In the construction of a double skin wall, the two skins tied together and built simultaneously and should have support pillars of at least every 4m. All walls need provision for expansion and contraction about every 6m.
- Use normal bricklaying techniques including damp proof courses where appropriate. Mortar should be 1 part cement to 4 parts sand. Mix stone from different packs to ensure a blend of shades. If using just one pack, we suggest you remove all stone from the packaging before work commences. With raised planters and retaining walls, leave some vertical joints un-mortared for drainage. Raised pools require a waterproof liner and a design that will support the weight of water.

## RETURNS POLICY

Our returns policy is in addition to your legal rights and our Conditions of Sale.

### GOODS DELIVERED TO YOU

- If you buy a product that we deliver to you, you may cancel your order (or any part of it) for any reason before delivery or within 7 days after delivery by getting in contact with us, either by phone or email.

This is subject to the following conditions:

- The product must be unused, as delivered, in saleable condition and returned in the original product packaging.
- You will receive a full refund of the price paid, less relevant delivery charges and collection charges. If we find that the product has not been returned to us in fully resalable condition, we reserve the right to refuse a refund on the item, or deduct up to 20% of the original selling price from the refund amount. Please include the delivery slip that you received with your delivery and indicate the reason for the return. We will refund your account once the items are received and processed.
- Items returned to us within the 7-day grace period, will be eligible for an exchange/credit. Any returns received outside this time frame may be considered at the sole discretion of McMonagle Stone and may only be refunded as a credit against a future purchase.
- We will refund to you the amount excluding shipping and handling charges you may have paid for the item. We do not accept returns, where the product packaging has been opened, used or damaged by the customer.

### DAMAGED GOODS

- If the product you purchase is damaged or faulty, we may offer an exchange or refund as appropriate in accordance with your legal rights. If you can see some of the delivery has arrived damaged, we ask you to sign for it as "damaged" on arrival. That way it will be easier for us to organise replacements, which is why it is important for you to inspect the delivery as much as you can before signing.
- Unfortunately, breakages can happen and we will send out replacements as soon as we can. To help us, we recommend that you open all products and check exactly how many individual slabs/pieces are broken, take photographs of the breakages, then contact our office.

**PLEASE NOTE:** We will refund the price of the item to the purchaser or exchange the product once it is received by us. A refund of the delivery charge will be given in the instance of incorrect, damaged or faulty goods.

For more detailed information on laying paving please log onto [www.pavingexpert.com](http://www.pavingexpert.com).

For a full list of Terms & Conditions of Sale, please log onto our website.



Mountcharles, Co. Donegal, Ireland  
T. +353 74 973 5061 • F. +353 74 973 5408  
E. [info@mcmonaglestone.ie](mailto:info@mcmonaglestone.ie)

[www.mcmonaglestone.ie](http://www.mcmonaglestone.ie)