

# Pier Head, Liverpool



## Marshalls' Light Beige Granite

### Challenge

Pier Head is a prestigious heritage site on the waterfront of the river Mersey in Liverpool which sits in front of the impressive Three Graces – 'The Liver Building', 'The Cunard Building' and 'The Port of Liverpool Building'.

2008 sees Liverpool hosting the title of 'European Capital City of Culture' and Pier Head is being transformed beyond recognition to be one of the main attractions which will connect canal links from the East and West coast of England.

The Pier Head Canal link is one of the most focal development points currently under construction in Liverpool. The challenge was to find a hard landscaping solution which would be sympathetic to its historic surroundings and ensure the quality of

both materials and construction were to the highest standards.

The exciting new landscape will consist of bespoke natural granite paving, concrete paving and masonry which create exciting seating features over three tiers on both sides of the canal link creating a fantastic viewing and focal point.

The tiered elements will consist of granite seating and step elements with intricate transitional and anti-skateboarding units. Marshalls Natural Stone Division, together with the Design Team, produced a series of 2D and 3D component drawings which reflect the Architect's concept design for the seating, parapet cladding, basin cladding and step and coping details.

Due to the sheer size and bespoke shape of some of the units, a value engineering exercise also had to be undertaken to bring the scheme in line with budgets. Schedules were then to be produced from a vast number of 3D component designs which were used to produce the units in China, ready to be installed on site.



## Marshalls

Transforming Britain's Landscapes

### Solution

Marshalls were shown and presented with both schematic and plan view drawings of the conceptual design from which production drawings and schedules were produced for approval by the client and the contractor. With the involvement of Marshalls specialists in natural stone and the technical and design teams, each of the 22 walls, 4 parapets and 2 canal basins were detailed to exceptional quality.

Marshalls' ethical policy and accredited suppliers played a huge part in securing this scheme, as well as Marshalls' commitment to continual quality measures and improvements. It was imperative that Marshalls offered a sound and ethically accredited supplier to this scheme as it was a mixture of private and public funding. This gave the client re-assurance that the sourced material was both sustainable and produced responsibly.

Even through the delivery period of this material there were the inevitable unforeseen challenges on site to make unusual design features work. Marshalls' were able to help overcome all these issues in conjunction with the superb contracting team at Balfour Beatty.

Marshalls Head Mason was instrumental in working with and advising on the possibilities of the stone supplied to site. Marshalls worked with the Balfour team on site for several weeks on the lead up to hand over to ensure any minor amendments could be made to ensure the deliverance of a quality scheme.

In addition to the larger units, Marshalls also supplied bespoke units to suit Marshalls Duo-Slot Drain System which was also used on the site as well as unique features around the historic statues and landscaped element of the project.

Project Manager for Balfour Beatty Civil Engineering Ltd (BBCEL), Matthew Storr, commented "The aspirations of the client was to construct a first class public realm space around the Pier Head section of the Leeds-Liverpool Canal link, striving for excellence in quality was paramount.

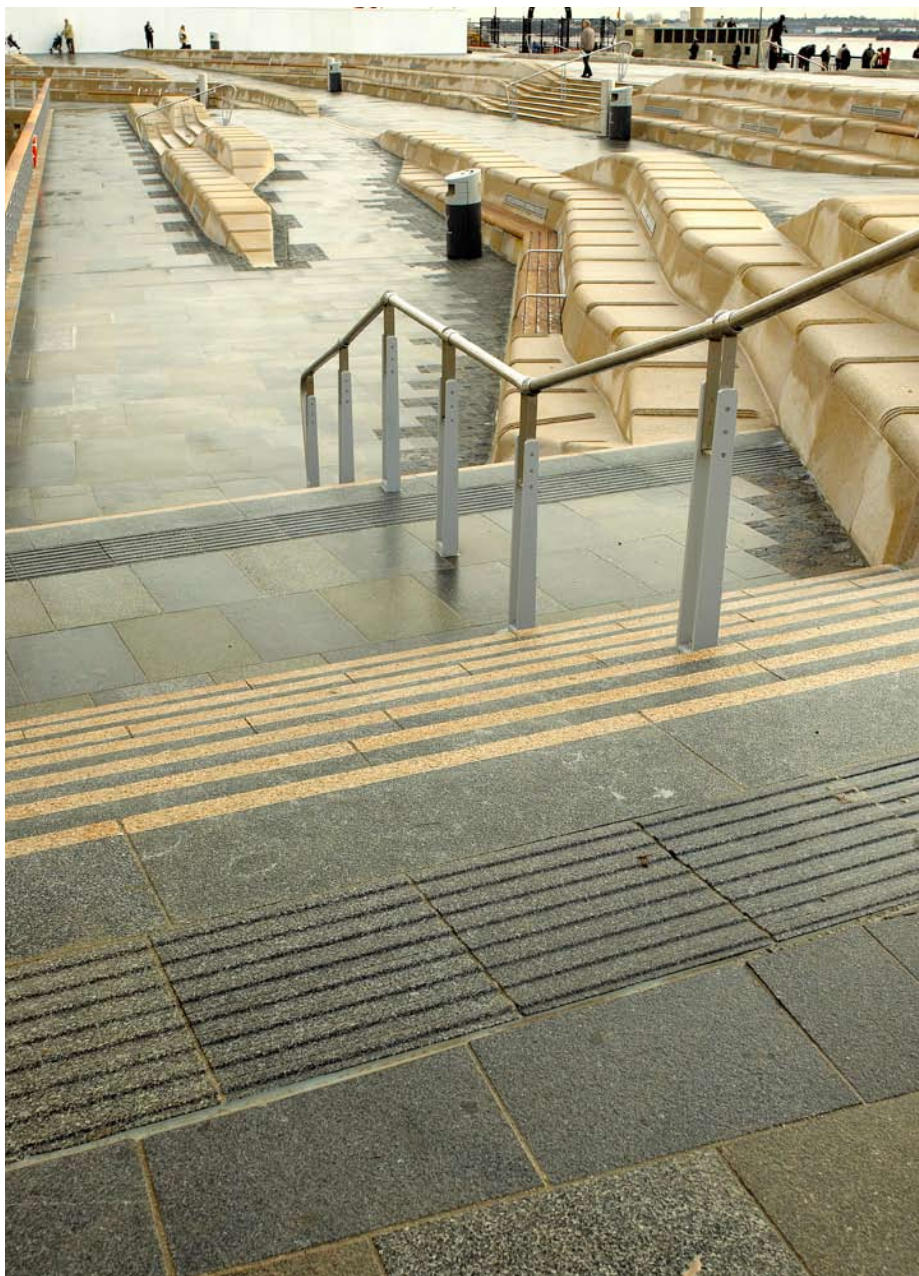
The finished product is a credit to the professional approach of Marshalls from concept through to design and delivery of the scheme. The quality of the finished product could not have been achieved without the open and honest working relationship between Marshalls and BBCEL. The scheme pushed the boundaries of what can be achieved with natural stone and Marshalls played an invaluable role in delivering this world-class public realm space."



Marshalls' Granite Paving compliments its World Heritage site surroundings



Light Beige Granite Street Furniture



**Granite paving incorporating Hazard Warning Tactiles**

**Benefits**

This is another scheme in the North West delivered in conjunction with one of our key contractors, Balfour Beatty Civil Engineering Ltd.

Balfour Beatty and Marshalls worked side by side from conception of the design offering support and guidance along the way where required. The transparent and honest working relationship between the two companies meant any outstanding design problems or construction issues could be overcome with minimal disruption.

This regenerated public space has created much interest from both the end users and national design practices alike as an example of what can be achieved with natural stone and an integrated approach to hard landscaping which includes paving, water management and street furniture to create a seamless and cohesive space.

Following the opening of the South-End of the scheme, positive feedback has been received from contractors and architects who have praised the aesthetic qualities of the material and the quality of installation by the contractor.

This is truly a world class scheme on a World Heritage site that everyone can be very proud of. Marshalls will be involved in providing hard landscaping solutions to the North-End of the scheme to be completed along with the central Ferry Terminal in the near future.



**Marshalls Duo Slot Drain**



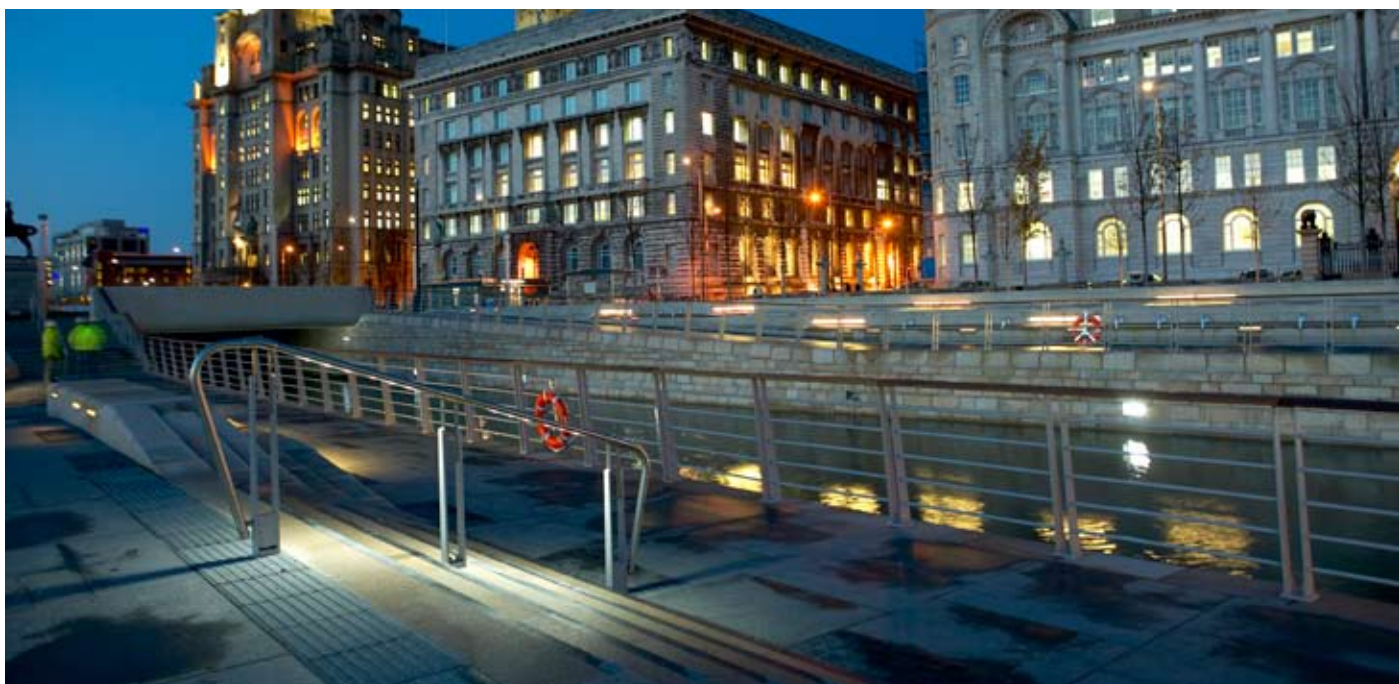
**Granite Setts**



**Marshalls' Granite anti-skateboarding units**



Inset lighting show off the Granite at night



Granite Paving and lighting complete the Pier Head landscape

**Client:**

Liverpool Council & British Waterways

**Contractor:**

Balfour Beatty CE Ltd

**Engineer:**

Arups

**Architect:**

Edaw (London)

**Marshalls Product Used:**

- Light Beige Granite Seat Walls (Copings, Risers & Transition units)
- Light Beige Granite Setts, Channels & Parapet Cladding
- Unselected Light Beige Granite Basin Cladding and Copings
- Mid Grey Granite Pavings and Setts
- Dusky Grey Granite Pavings & Setts
- Long Island Green Granite Paving & Setts
- Marshalls Slot Drain
- Perfecta Concrete Paving
- Granite Hazard Warning Tactile Paving

**Specialists Involved:**

