

World Square, London



World Square, London

The transformation of Trafalgar Square forms part of the 'World Squares for All' project, undertaken by Transport for London (TfL) with a mission 'to transform London's key heritage sites into truly 'world class' spaces to be enjoyed by Londoners and visitors alike'.

The key objectives of the project were the pedestrianisation of the north side of the Square, to provide direct access to the National Gallery, the creation of a new central staircase from the North Terrace to the Square and renewed paving to provide aesthetic appeal to the whole area.

Marshalls involvement with Trafalgar Square began at the earliest stages with initial pre-tender discussions with project managers Schal, architects Foster and Partners and TfL. Marshalls was also consulted about preferred contractors and recommended Fitzpatrick based on highly successful previous project partnerships.

From the commencement of work on site, the partnering approach of Marshalls and Fitzpatrick proved the key to project success. Potential logistical problems, due to the busy location and lack of site storage facilities, were addressed quickly before they impacted on the project. Following discussions with Fitzpatrick, Marshalls developed a new traceable labelling format that enabled the right types and correct quantities of stone to be delivered to site on a 'just in time' basis.

The nature of the project also demanded a substantial quantity of Bespoke radial paving units, which Marshalls designed and produced with specialist CAD equipment. In total, Marshalls supplied some 22,000 m² of high quality Diamond Sawn Yorkstone Paving as well as an additional 7,000 m² of Granite Kerb.

The redeveloped Trafalgar Square opened in July and now takes its place as one of the Capital's most recognisable attractions.

"As soon as a potential problem was identified, Marshalls' reaction was immediate and indicative of the whole company's approach – put simply, they found a solution rather than coming back with another problem – the result was a hugely successful project." Graham Davey, Purchasing Director, Fitzpatrick

Products Used:

- Yorkstone Paving
- Granite Kerb
- Max-E-Channel Linear Drainage System with Bespoke Natural Stone Tops

Specialist involved:


Marshalls
paving


Marshalls
water management


Marshalls
kerb

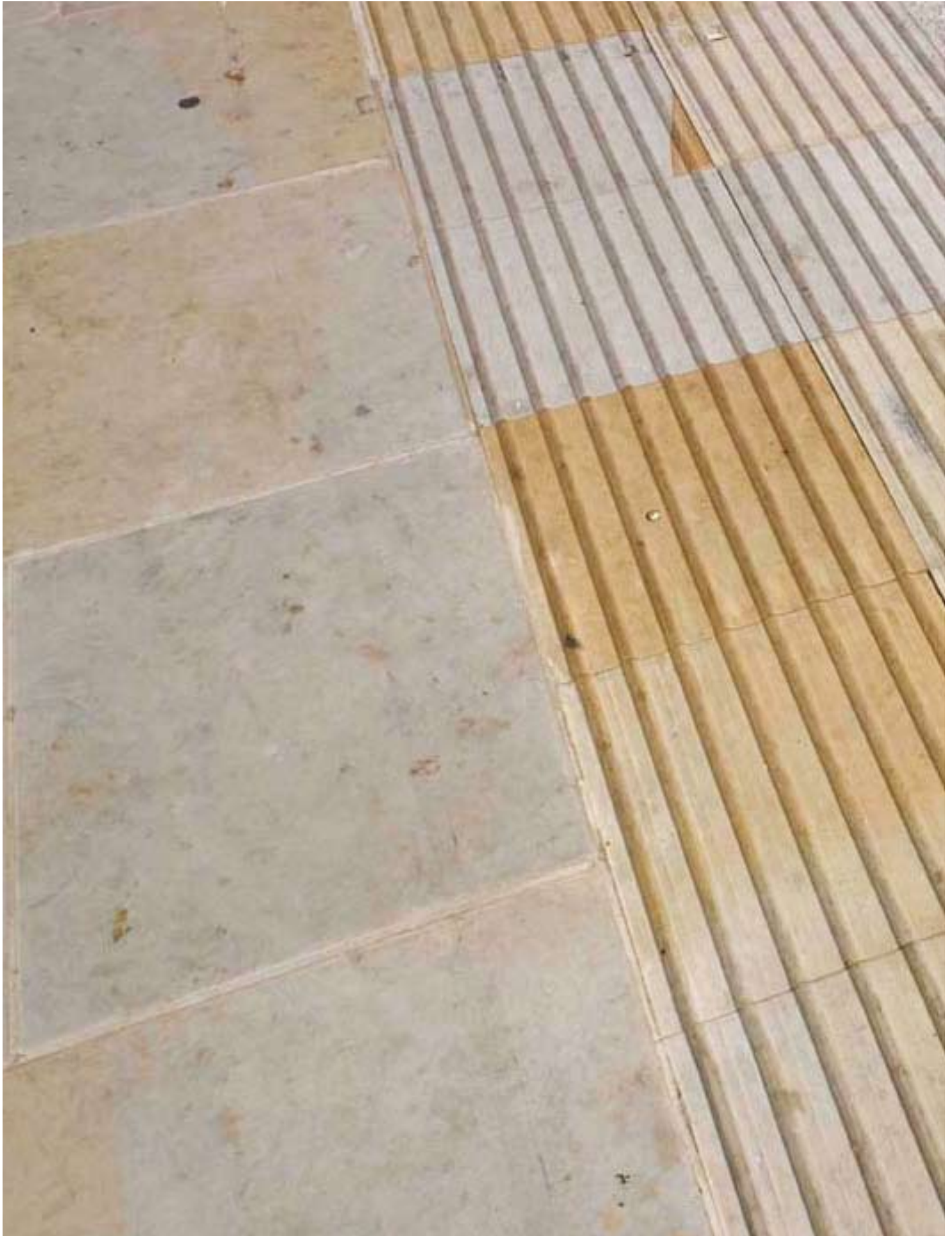


Marshalls

Transforming Britain's Landscapes



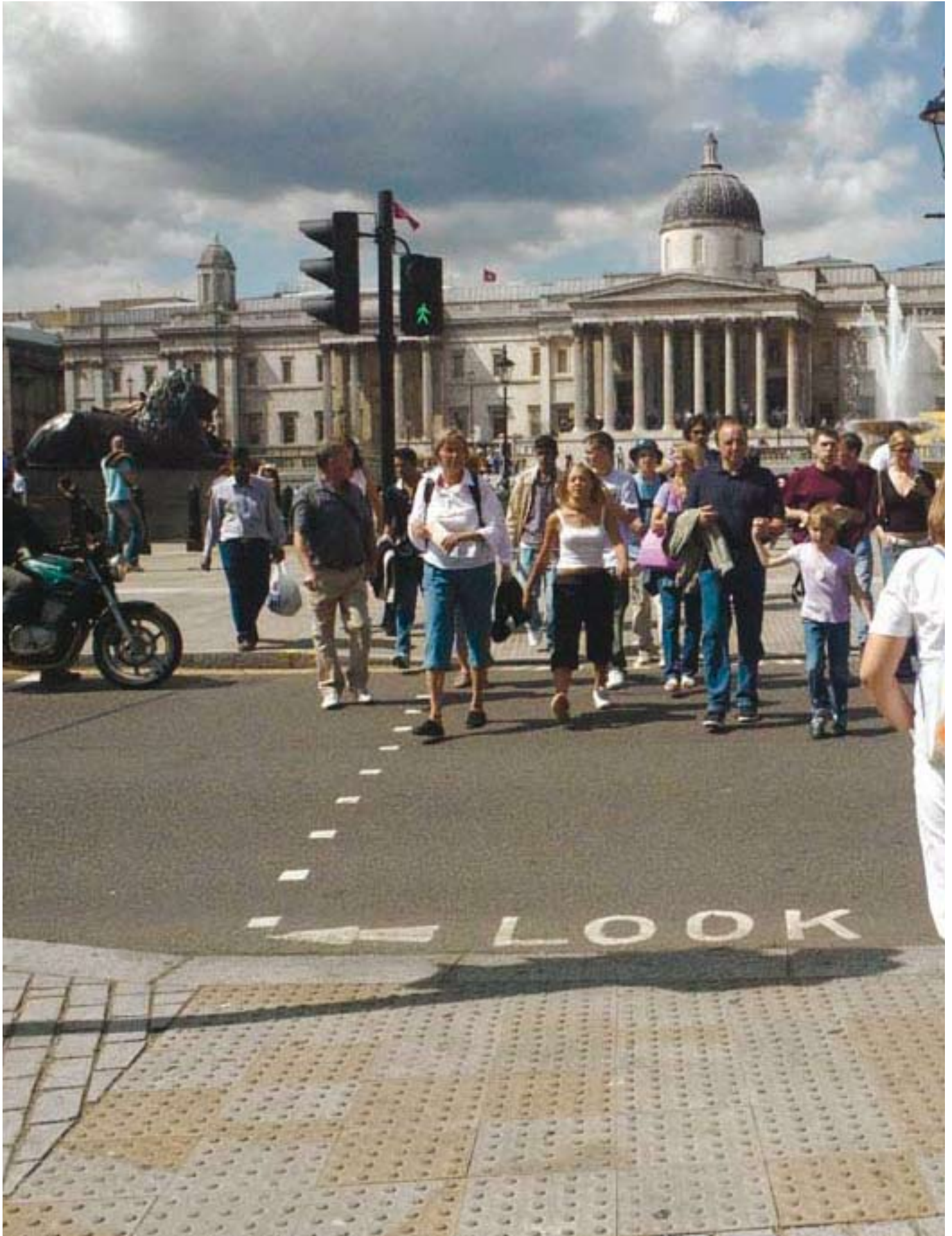
World Square, London



World Square, London



World Square, London



World Square, London



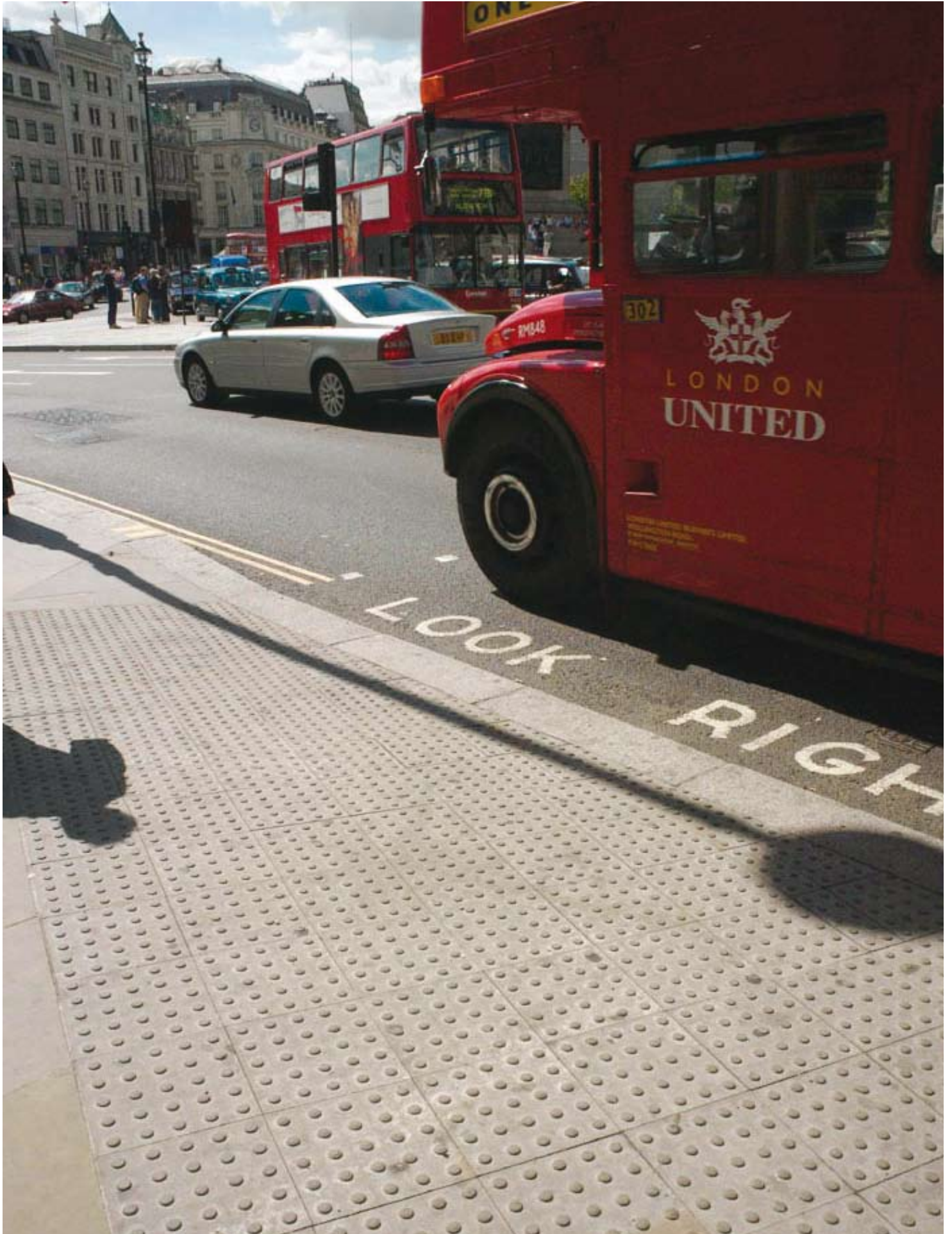
World Square, London



World Square, London



World Square, London



World Square, London



World Square, London