

ALBION STONE

portland stone - naturally



**British Museum WCEC  
London W1**

**Architect/Designer:**  
Rogers Stirk Harbour and Partners

**Client:**  
The British Museum

**Main Contractor:**  
Mace

**Stone Fixing Contractor:**  
Szerelmey

**Completion Date:**  
2014

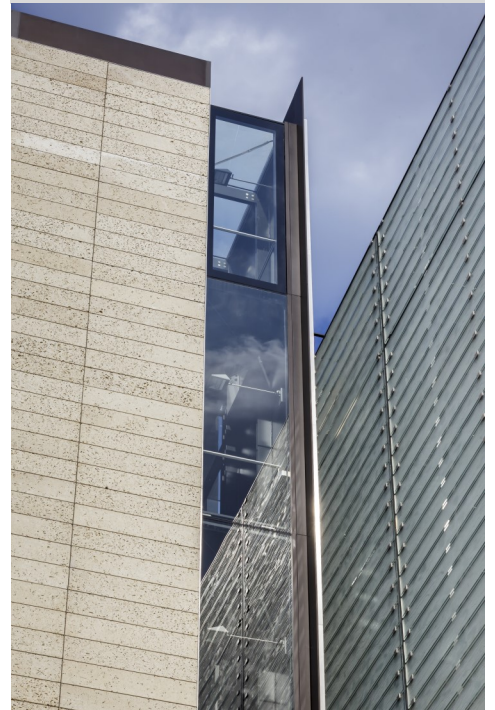
**Portland Stone:**  
Bowers Roach

**Scope of Project:**  
Construction of new exhibition centre in the North West corner of the museum.

The British Museum's new 'World Conservation and Exhibitions Centre' provides an exhibitions gallery, state-of-the-art conservation studios, science labs, storage areas for its study collection and facilities to support its extensive UK and International loans programme.

World-renowned architects Rogers Stirk Harbour and Partners (RSH+P) won a competition to design the new facilities at the museum back in 2007. Their design represents the architectural legacy of the Grade I listed building whilst improving and enhancing the existing infrastructure.

After deciding to use Portland stone, the design team contacted Albion Stone to consider the different options and decide which bed of Portland stone would be best suited to their design.



**Shortlisted for the 2017  
Stirling Prize**

**RIBA London Award 2017**

[www.albionstone.com](http://www.albionstone.com)

t 01737 771772 e [enquiries@albionstone.com](mailto:enquiries@albionstone.com)

ALBION STONE

*“The decision to use Roach stone was a result of collaboration with Albion Stone to understand the physical characteristics of the material, its performance over time and its visual qualities both at the quarry and in its use on numerous buildings. The Bowers Roach stone beautifully demonstrates the texture, grain and variation of the material itself along with clues to its geological formation.”*

Kevin Gray, Associate - Rogers Stirk Harbour and Partners



To ensure they specified a stone in harmony with the existing Grade 1 listed building, it was important for RSH+P's design team to understand the stone's physical characteristics and its performance on several historic buildings. To help with the selection process we arranged a guided City and West End Tour to show them different beds of Portland stone on several historic and contemporary buildings.

Following the Tour, RSH+P's design team, along with representatives from the Museum Trustees, visited Albion Stone's quarry to view the large Range Panels which showed control production. This, along with our ISO 9001 and ISO 14001 certification, allows clients and architects to specify the stone of their choice with confidence.

Viewing the Bowers Roach Range Panel confirmed RSH+P's decision to specify it for the project and Albion Stone supplied 1,600m<sup>2</sup> in sizes up to 1520x330mm for the façades of the new centre pavilions.



[www.albionstone.com](http://www.albionstone.com)

t 01737 771772 e [enquiries@albionstone.com](mailto:enquiries@albionstone.com)

