

ALBION STONE

portland stone - naturally



St James's Market London SW1

Architect/Designer:
Make Architects

Client:
The Crown Estate & Oxford Properties

Main Contractor:
Balfour Beatty

Stone Fixing Contractor:
Techrete & GIG Fassenden

Completion Date:
2016

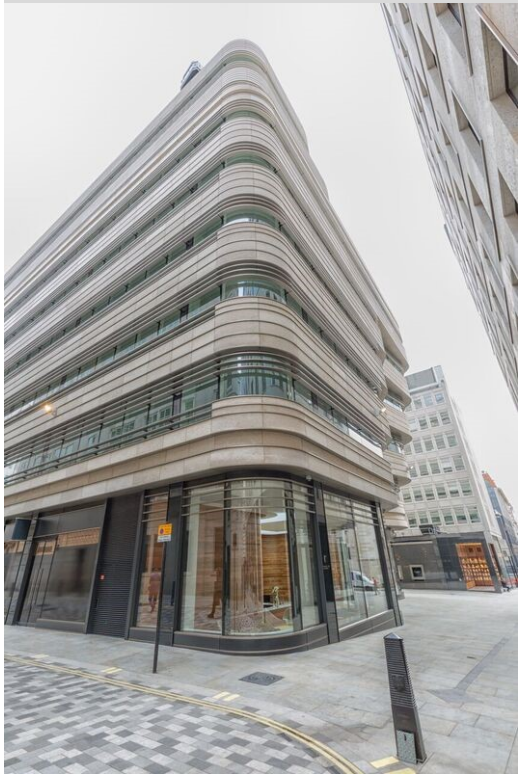
Portland Stone:
Fancy Beach Whitbed, Jordans Whitbed & Grove Whitbed

Scope of Project:
Stone-on-precast cladding, plinths & unitised façade

St James's Market is part of The Crown Estate's core West End holdings and is an architectural masterpiece in the centre of London.

Make Architects were commissioned by The Crown Estate to redevelop two key blocks as part of a major ten-year investment programme to revitalise the St James's area.

Albion Stone supplied over 4,000m² of Fancy Beach Whitbed for the stone-on-precast panels, starting with a coarse finish on the bottom working up to a fine finish at the higher levels. Grove Whitbed was used for the plinths, similar to the Stock Exchange at Paternoster Square.



The second block, adjacent to Haymarket, is open jointed. It involves a curved Portland Stone and glass wall wrapped around the building using 3,400m² of Jordans Whitbed on a unitised façade with horizontal aluminium fins.

www.albionstone.com

t 01737 771772 e enquiries@albionstone.com

ALBION STONE



“Albion Stone supplied a beautiful product which is integral to the architectural expression of both buildings. The use of different beds and finishes, combined with the precision of the curved panels, resonates with the values of the St James’s area.”

Jonathan Mitchell, Project leader, Make Architects



www.albionstone.com

t 01737 771772 e enquiries@albionstone.com

ALBIONSTONE