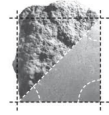
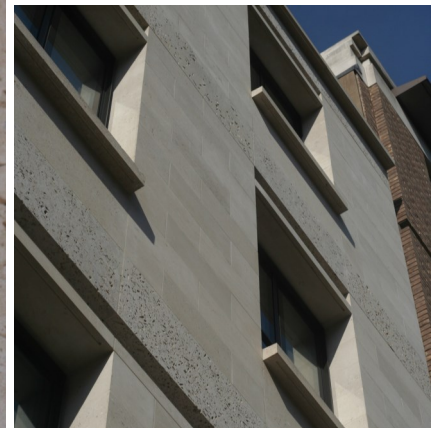
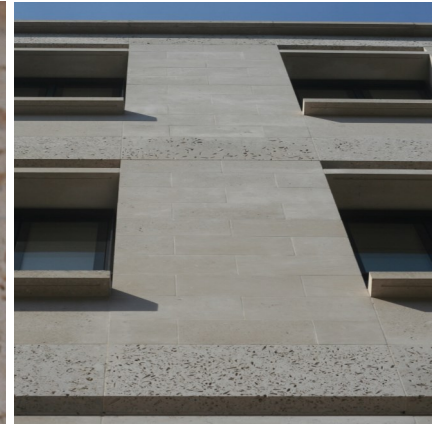


portland stone - naturally



ALBION STONE

# 14 Grosvenor Street, London W1



**Architect/Designer:**  
**Squire and Partners**

**Client:**  
**Legal Estates**

**Main Contractor:**  
**Sir Robert McAlpine**

**Location:**  
**Mayfair, London**

**Portland Stone:**  
**Jordans Whitbed and  
Portland Roach**

**Scope of Project:**  
**Demolition and construction  
of new five storey building.**

Situated in the heart of Mayfair's Conservation Area, 14 Grosvenor Street is amongst some of London's most admired commercial spaces. With the existing building at No. 14 deemed unsafe for occupation, permission was given for the original Georgian building to be demolished and replaced with a new 5,500 square foot contemporary office development.

The project brief was to ensure a typical Georgian style was present with the building material to blend in with the local surroundings. Being known as the 'Stone of London' Portland Jordans Whitbed was chosen for cladding the construction's front façade Portland Roach for external feature bands and internally.

The concern with the choice of stone from the Client's point of view was whether the stone was durable. Albion Stone sent the project team to a couple of projects in the West End to view Portland stone on buildings which prove

that it is a durable Limestone.

Albion Stone supplied approximately 142m<sup>2</sup> of Portland Jordans Whitbed and Roach for the external stonework at 14 Grosvenor Street. We also supplied an additional quantity of Portland Roach for the internal stonework package.

**Tim Sheridan from Squire and Partners commented,**

***'Squire and Partners have developed a long history of working with Albion's stone, having designed buildings in sensitive central London locations for over 35 years.'***

***'We chose two varieties of Portland stone from Albion Stone for this Mayfair project – the first a fine textured Jordan's Whitbed which ties into the surrounding streetscape, coupled with a coarser Bower's Roach featuring shell fragments and fossil voids, which adds a layer of natural rustication to spandrels that highlight the horizontal lines of the building.'***

[www.albionstone.com](http://www.albionstone.com)

t 01737 771772 e [enquiries@albionstone.com](mailto:enquiries@albionstone.com)

ALBION STONE